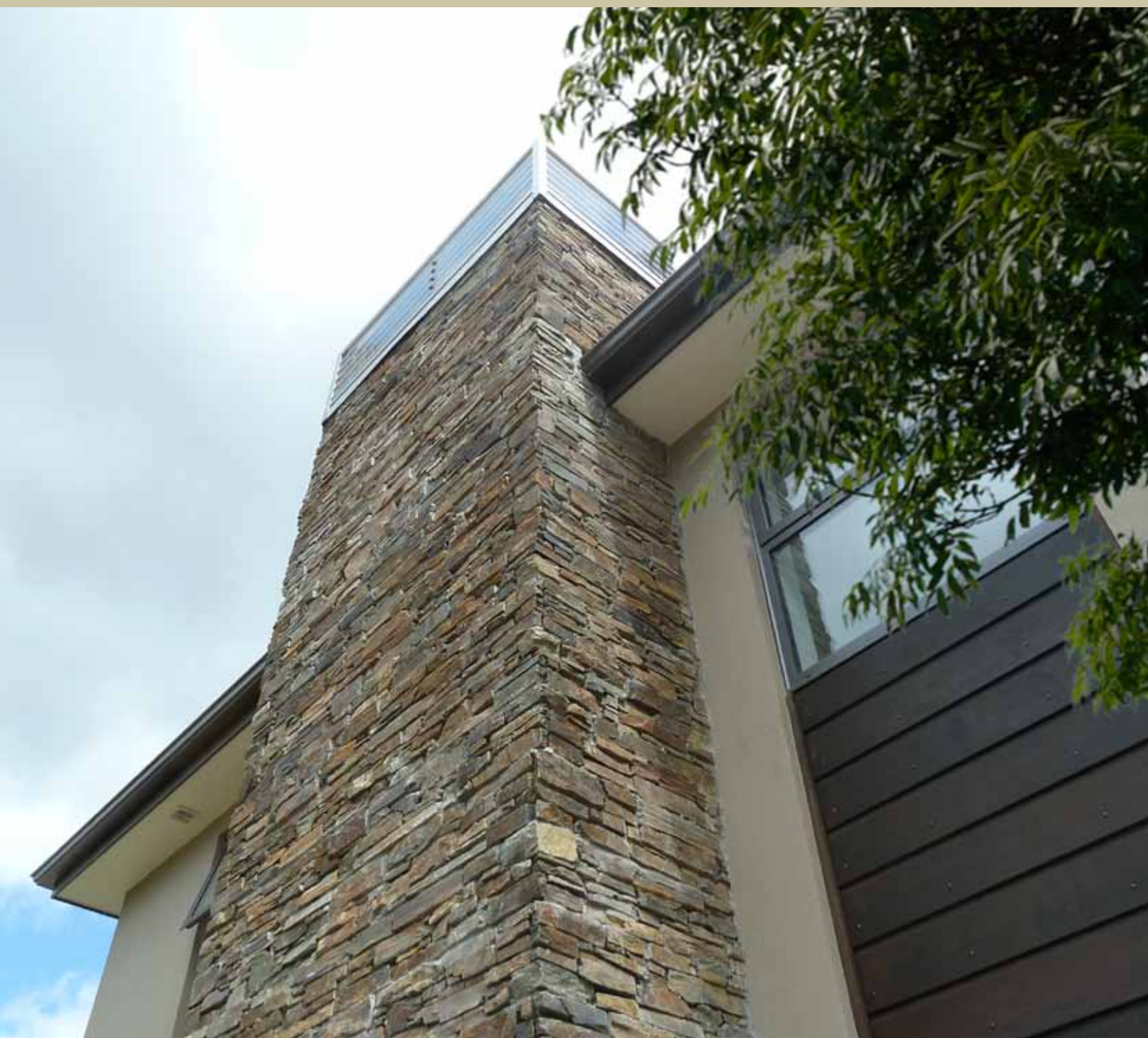


# Real Stone made simple

## SCHIST BRICK RANGE





## NATURES DESIGNA SCHIST

There is nothing more durable, more natural or more breathtaking than stone produced by Mother Nature.

Introducing a modular stone system combining the ease of brick installation with the beauty of Natural Schist.

- Modular brick, block and panel systems already proven worldwide.
- Developed and tested for the New Zealand Market.
- Virtually maintenance and fade free; weather resistant and strong.
- Adds Value, Character and Natural Beauty.

## CONTENTS

*Designa*schist  
Real stone made simple

Versatility . . . . .	3
Dimensions . . . . .	5
Technical . . . . .	6
Contact Information . . . . .	7



GREY ALPS

AUTUMN HUE

AUTUMN HUE



## VERSATILITY & VARIATION

Schist is a natural stone which varies in texture and colour.

This variety provides the rugged beauty sought by customers worldwide.

The full range of possible colours within each batch cannot be fully captured by one or a few photographs.

These provide a good indication of what tones and shades will be present in the schist stock, as will physical samples.

From the cool grey hues invoking images of mountain slopes sparkling in the sunlight, to the rich, warm, muted shades of Autumn. Designa Schist offers versatility in design from a fully clad schist home, to entrance ways, columns, feature walls, chimneys, fences, letterboxes, landscaping, internal features and fireplaces.

From traditional to ultra modern, domestic to commercial, Designa Schist Brick has revolutionised the use of natural stone with its ease of installation and reduction of labour costs.



Colours shown are indicative only and should not be used for final selection



## SCHIST BRICK DIMENSION DETAILS

**Product thickness: 80mm Nominal**

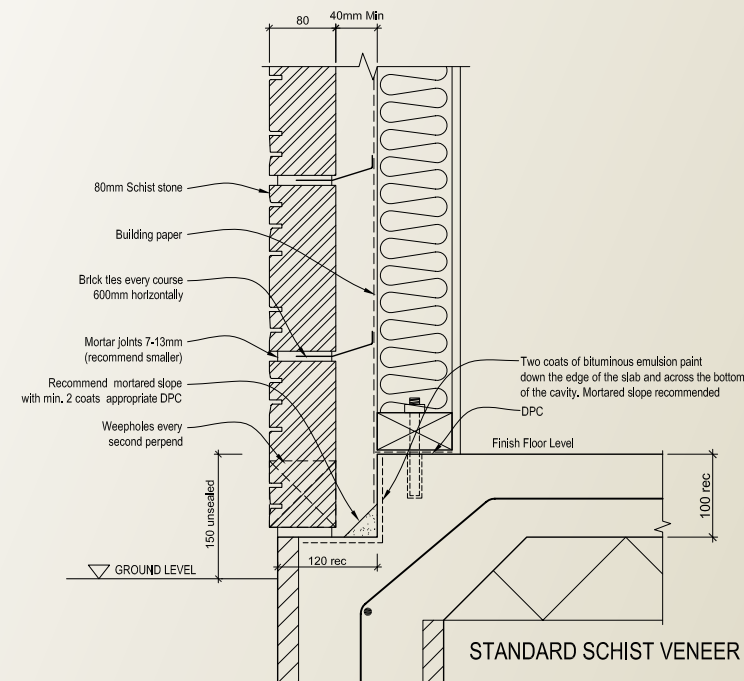
**Weight per Square Meter: 140Kg/m<sup>2</sup> approx.**

Item	Unit Weight	Dimension	Units Per Pallet
<b>1</b> Full Size Z Bricks	14 Kgs	500 x 200 x 80	96
<b>2</b> Full Size End Bricks	14 Kgs	550 x 200 x 80	96
<b>3</b> Half Size End Bricks	7 Kgs	300 x 200 x 80	144
<b>4</b> Internal Small Corner Bricks	9 Kgs	170/320 x 200 x 80	88
<b>5</b> Small Symetrical Corner Bricks	9 Kgs	250/250 x 200 x 80	72
<b>6</b> Small Corner/500mm Column Bricks	14 Kgs	200/350 x 200 x 80	64
<b>7</b> Large Corner/700mm Column Bricks	19 Kgs	200/550 x 200 x 80	32
<b>8</b> Sill Caps - 40mm	10 Kgs	500 x 140 x 40	-
<b>9</b> Column Cap for 500mm Columns	38 Kgs	550 x 550 x 40	-
<b>10</b> Column Cap for 700mm Columns	55 Kgs	750 x 750 x 40	-

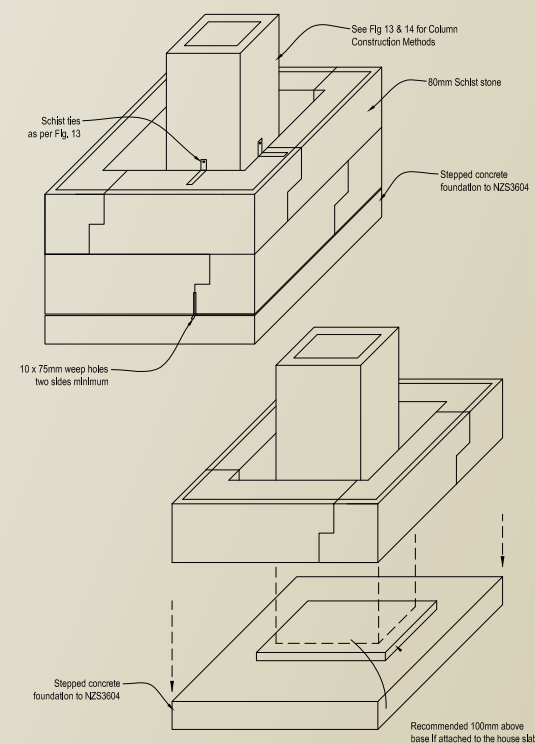


## TECHNICAL DETAILS

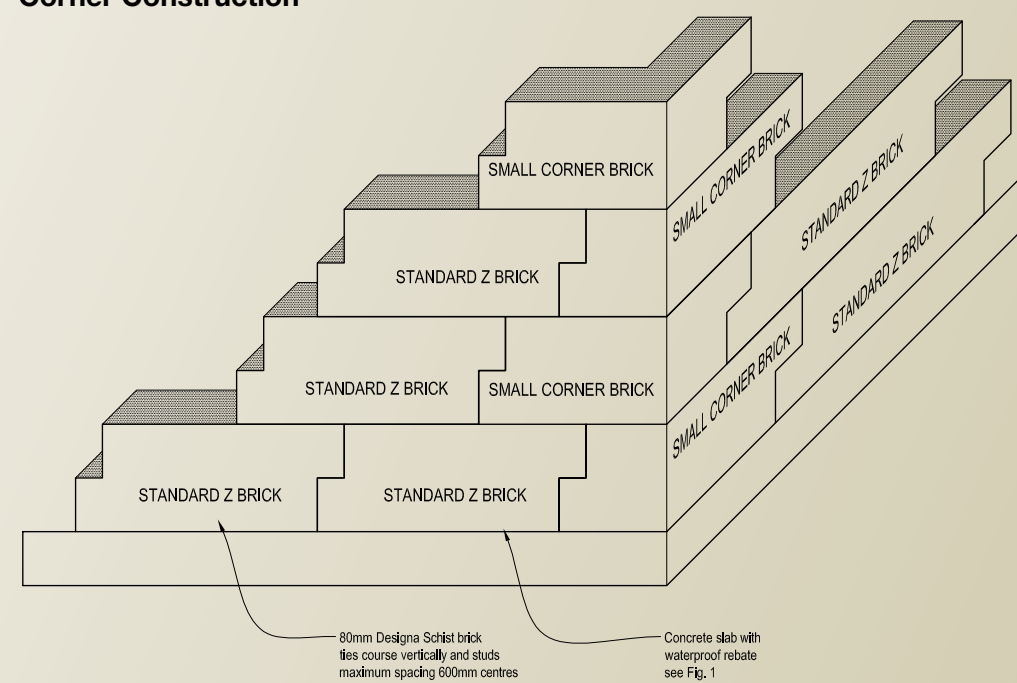
**Fig.1 - Standard Designa Schist Veneer**



**Fig.2 - Example of Column Construction**



### Fig.3 - Corner Construction



For detailed Technical Information please refer to our website: [www.midlandbrick.co.nz](http://www.midlandbrick.co.nz)

## contact us

Toll Free: 0800 MIDLAND (0800 643 5263)

Email: [info@midlandbrick.co.nz](mailto:info@midlandbrick.co.nz)

**Proudly 100%  
NZ Owned &  
Operated**



or visit our website at [www.midlandbrick.co.nz](http://www.midlandbrick.co.nz) or [www.designaschist.co.nz](http://www.designaschist.co.nz)

### Head Office:

Midland Brick NZ  
NZ Brick & Stone  
8 Cowley Place, Rosedale,  
Albany Auckland, New Zealand  
Ph: 09 414 1075  
Fax: 09 414 1073

### Lower North Island:

Creative Brick & Stone  
NSG House, Ground Floor  
69b Discovery Drive, Whitby  
Porirua, New Zealand  
Ph: 04 234 6951

### South Island:

Brick & Stone SI  
35 Edmonton Rd, Hornby South  
Christchurch, New Zealand  
Ph: 03 349 5006  
Fax: 03 349 5002